



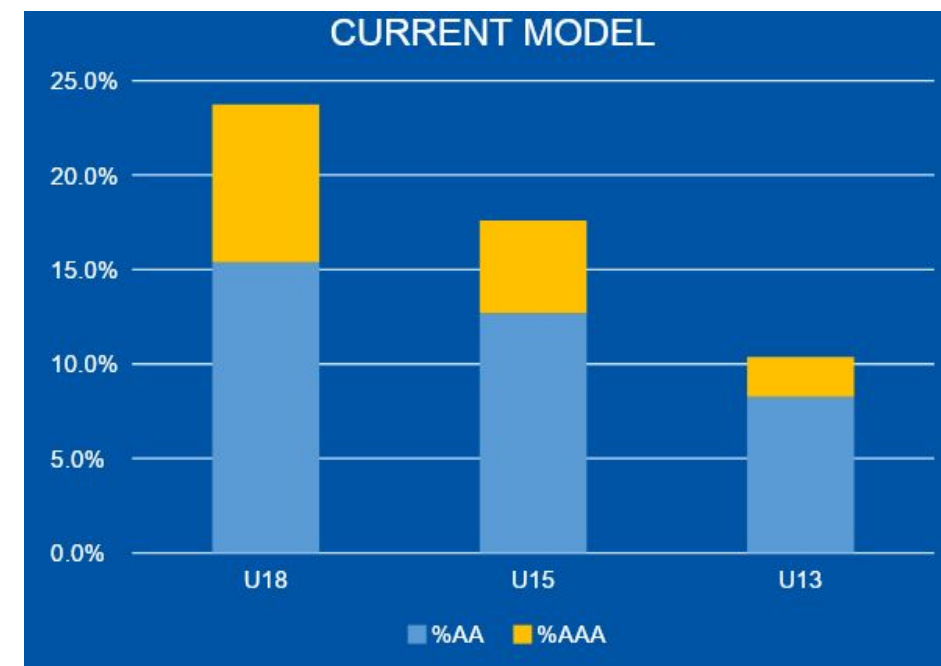
U13 ELITE STRUCTURE

2025-26 SEASON

BACKGROUND



- There has been an increased demand for a higher level of hockey at the U13 level in Alberta.
- Some Members perceive 53 teams at the top level of U13 within Hockey Alberta is not competitive enough
- While the U15 Elite Model is seen as competitive (players are returning for this level of play), the U13 model is not.
- U13 AAA is being piloted in Northern Alberta throughout the 2024-25 season, which has provided some insights.
- Only 10% of U13 players can currently access 'AA & AAA' hockey, compared to 17% at U15 age category.



A NEW U13 ELITE MODEL



PRINCIPLES:

1. Host two U13 AAA teams for each U18 AAA Draw Zone in the province, to strengthen development pyramid (32 U13 AAA to 16 U18 AAA).
2. Each U13 AAA teams is to have a minimum of 1 AA team under the AAA team, and preferably 2 AA teams below the AAA team.
3. Allow Draw Zone Leadership to determine the U13 AA host Minor Hockey Clubs for each zone, to respect ice and registration discrepancies within the zones and communities that host them.
 - Target 6 – 9% of U13 Players in a Draw Zone playing at AAA level
 - Target 15 – 18% of U13 Players in a Draw zone playing at the top 2 levels of U13 Hockey (AAA & AA)

CALGARY

		U13 AAA Programs			
	CBHA	CBHA	CRAA	CRAA	
	CNHA	CNHA	NWCAA	NWCAA	
		U13 AA Programs			
Wolverines	Bow Valley	Knights	Southwest	Glenlake	Trails West
Raiders	McKnight	NW Warriors	Springbank	Bow River	

Summary

- Each U18 AAA draw zone in the province is required to host 2 U13 AAA teams
- Each U13 AAA team must have 1 or 2 U13 AA teams feeding it
- Therefore, the Calgary Region will host 8 AAA teams and 11 AA teams in 2025-26
- 8 - U13 AAA Teams – 2 Per Elite Association (evenly selected)
- 11 - U13 AA Teams – These will be hosted by the Calgary Community Clubs and operate as AA programs (1 per club).

A NEW U13 ELITE MODEL



U13AAA FOR CALGARY:

1. Each Elite Association in Calgary operates 2 – U13 AAA teams
 - a) Aligns with the model in the full province (2 U13 AAA for every 1 U18 AAA)
 - b) Supports the development pyramid for U15 & U18, players entering Elite Clubs at the U13 AAA will likely remain within elite program
 - i. Within our current model, history shows 1 team of U13 AA players per year moves back to community hockey
 - c) Game lengths will move to 2 hours slots – 1 flood every 2 periods
 - d) To create enough ice we will do this at U15 AA as well
 - i. Same game format that existed prior to 2018
 - e) Final league structure & number of Games is still TBD
 - i. U13 AAA to operate as a 'Southern Alberta Division – 16 teams'

A NEW U13 ELITE MODEL



U13 AA FOR CALGARY:

1. AA Program will operate inside the community programs
 - a) The Calgary zone will have 11 teams (1 team per member club), and operate under the 'Calgary Division' of Hockey Alberta's AEHL U13 AA league
 - b) Aligns with the Hockey Alberta principles of 1-2 U13AA teams under each U13 AAA team in the Calgary region
 - c) Game slots in Calgary division will be 90 minutes, no floods (same as the current AA model that is being operated in Calgary)
 - d) Minimum Standards for this stream will be established by consensus among all Calgary Hockey Clubs, with details to be shared once finalized.
 - e) Players are not 'required' to play AA, and can opt out of this division
 - f) Coaching:
 - a) Parent Coaches are permitted
 - b) Coaching Certification Requirements are TBD

U13 AA Model in Calgary



WHY ALLOCATE TO COMMUNITY STREAM:

- Approximately 35% of U13AA players, (1 team of players) return to play with community clubs in their 1st year of U15
 - This model reduces the number of players bouncing back and forth between the different organizations within Hockey Calgary
- Community programming has traditionally offered strong development and changes in recent years has removed top players from our community programs
- Has synergies with the current U11 AA program offered by Member Clubs
- Provides opportunity for 'Qualified Parent Coaches' at U13 AA—an approach not typically used within the Calgary elite clubs but quite commonly practiced throughout the rest of the province
- Previous to 21/22 U13 AA was operated by community clubs

U13 AA Model in Calgary



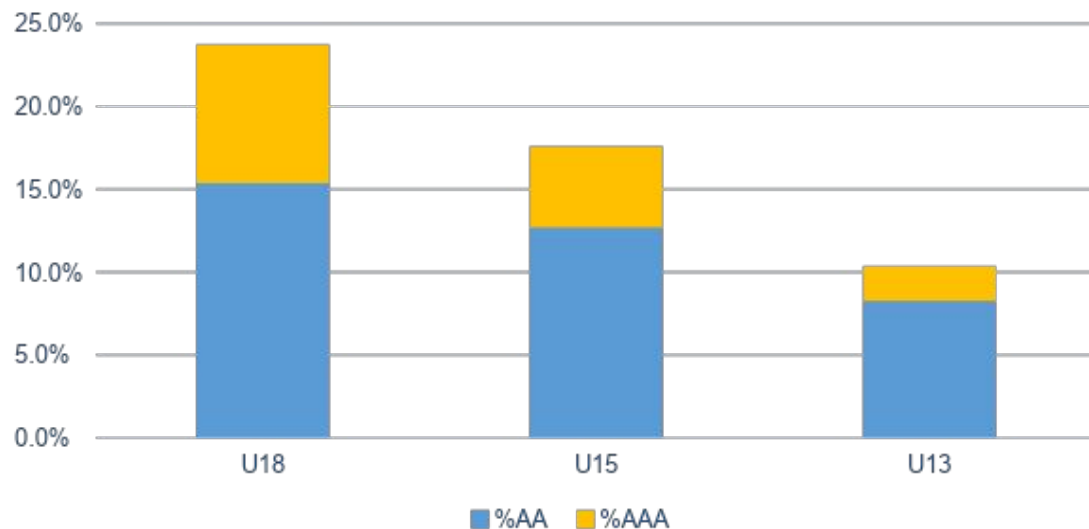
PROGRAM OVERVIEW:

- 11 Teams will play in 'Calgary Division' of AEHL
- Teams will likely play 26 – 30 'League Games'
 - All league game play in Calgary – no outside travel required
 - Teams will still participate in EMHW
 - Teams can attend tournaments as per Member Club policies
- League Game Lengths are 90 minutes – no floods
- Online scoring and statistics through AEHL & Flo Hockey
- Hockey Calgary Plans to continue major Thanksgiving Tournament, conditional on securing all the ice for this event
 - 32 – U13 AAA teams
 - 32 – U13 AA teams
 - 16 – U13 AA Female teams
- Evaluations as per Member Club policy and process
- Minimum operational standards will be agreed upon by all host clubs

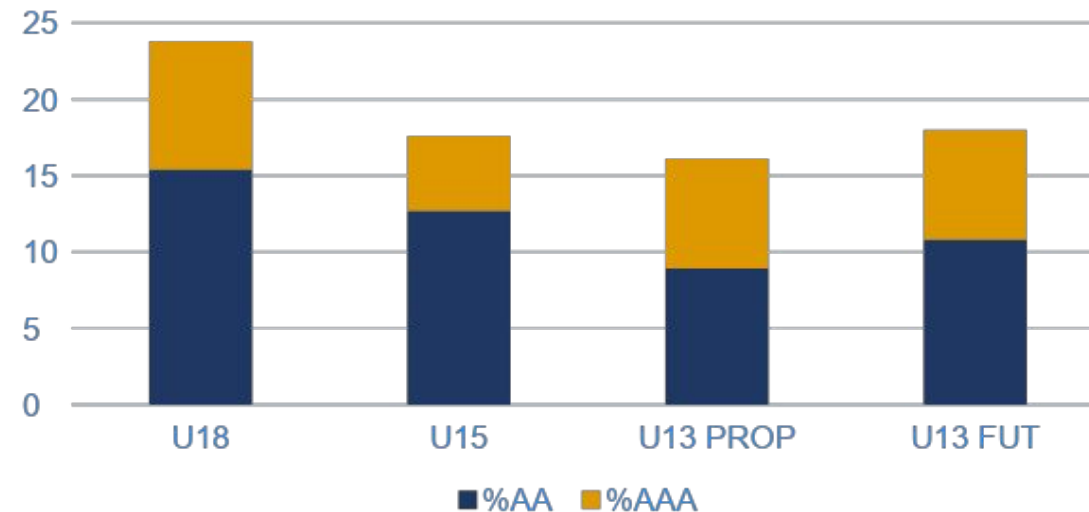
MODEL PROJECTIONS



CURRENT MODEL



NEW MODEL



- Once U13 AA is fully built out in a 2AAA : 3AA ratio, U13 will contain a higher percentage of players in Elite than U15, un-inverting the progression pyramid.